

LABELS FOR PIPES AND TANKS



HOW TO USE

1. After preparing the mould, apply a liberal coat (about 180-220gsm) of Roofing / Clear resin or Clear Gelcoat.
2. After a short while, when the resin cures to give a tacky surface, place Queen's Veil over the surface gently.
3. Stipple gently by vertical brush movement ensuring a thorough wet out. Once cured to a tacky surface, apply a coat of Pigmented Resin.
4. Lay CSM of the required density and wet it out thoroughly with Pigmented Resin. Additional layers of CSM / Woven Roving may be laid as per design requirements with Pigmented Resin and allowed to cure.

PRECAUTIONS

1. Short, soft and white brushes must be used. Fine bristled brushes are preferred as they will not disturb the Design Texture.
2. While stippling with the brush start from the centre of mould in outward direction. Strictly ensure that there is no horizontal movement of the brush, as it will disturb the design on Queen's Veil. Work slowly and gently with the brush in double curvatures, edges or corners.
3. Wet out thoroughly any dry patches by further application of Roofing or Clear Resin.



Adex Composites Pvt. Ltd.
 Row House C-2, Avon Plaza, Thakur Complex, Kandivali (East), Mumbai-400101, Maharashtra, India | Ph: +91-22-28701571 / 72 | Fax: +91-22-28701573
 Email: admin@queensveil.com / info@adexcomposites.com
 Website: www.queensveil.com / www.adexcomposites.com

AdventEdge: 2661 5123

QUEEN'S VEIL™

Presenting a wide range of designer textures for FRP

Introduction

Adex Composites Private Limited manufactures Printed Surface Veils for FRP products.

Adex offers a wide range of Printed Glass & Polyester Surface Tissue under the brand name **Queen's Veil**. It is available in an ever-growing range of textures such as wood-grain, marble, floral & metallic finishes. The best part is that the material is glass / polyester tissue, which is compatible with FRP. So you do not compromise on the structural properties at all.

We also undertake customised designs as per the requirement of end users. With this, Adex has opened up a plethora of possibilities for incorporating a variety of designs in FRP/GRP products. FRP products no longer need to be in plain finishes. FRP doors with matched wooden texture, Vertical Walls given a stone like or brick like finish, Bathtubs in marble & granite textures, Roofing sheets in shining colorful glitter bring life to FRP products.

With its growing range of designs, **Queen's Veil** aims to ensure that there is a design texture that is suitable for all FRP/GRP products.

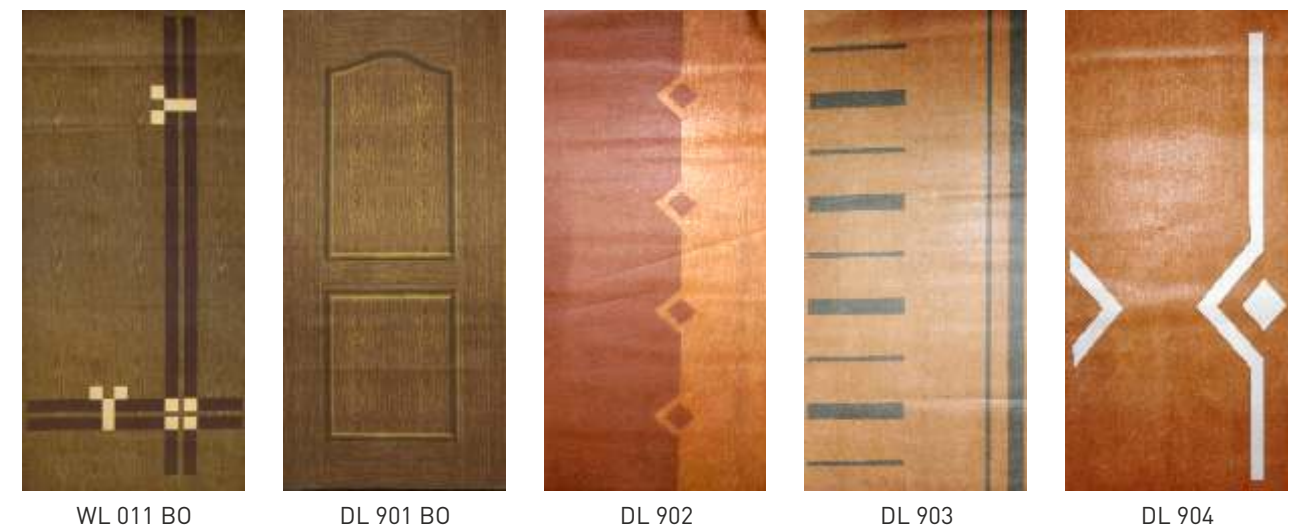
WOODGRAIN TEXTURES



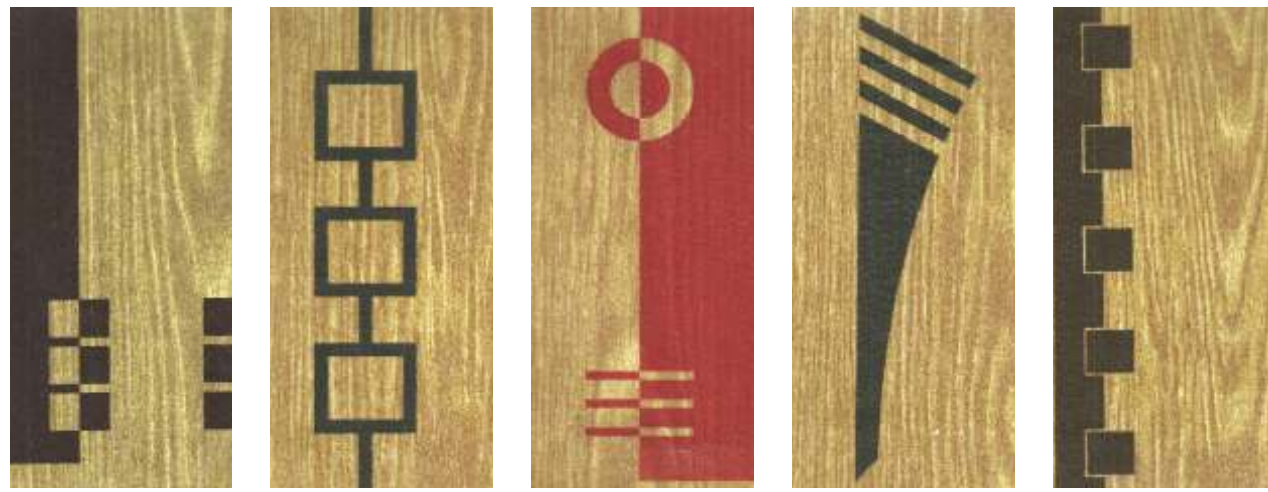
MARBLE AND GRANITE TEXTURES



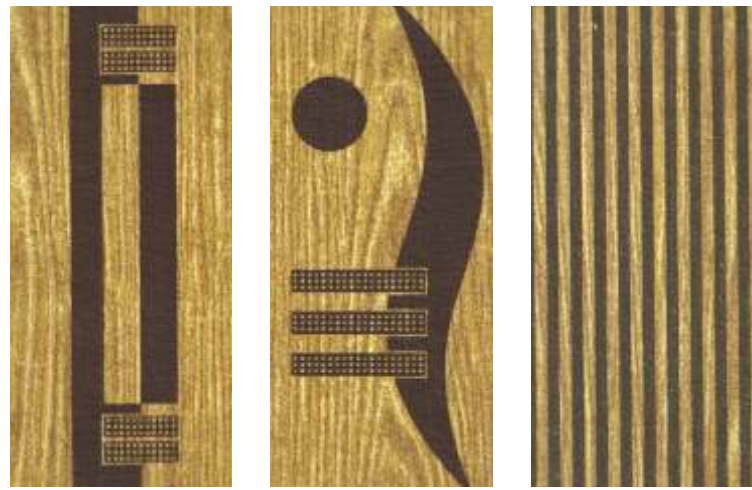
DOOR LAMINATION



DOOR LAMINATION



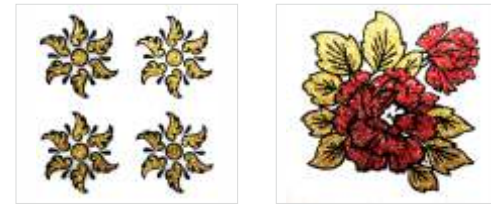
DL905 BO DL906 BO DL907 R DL908 BO DL909 BO



DL910 BO DL911 BO DL912 BO

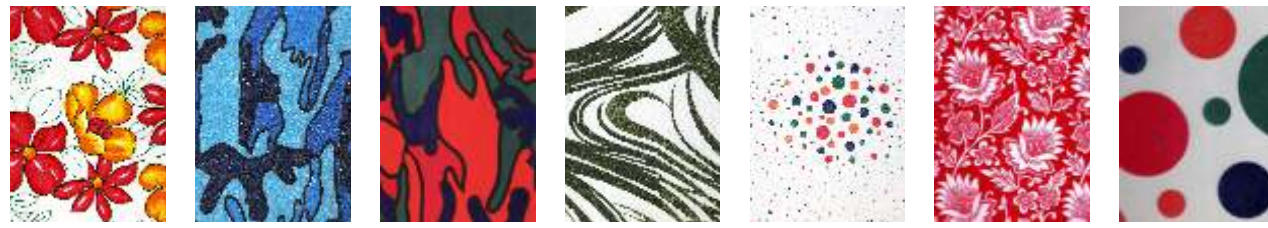


FS 429 FS 430 Black Gold Red



FS 431 Black Gold FS 432 Black Gold Red

ROOFING TEXTURES



R 105 F Yellow R 107 B R 108 R 109 G R 110 R 113 B R 115 MC

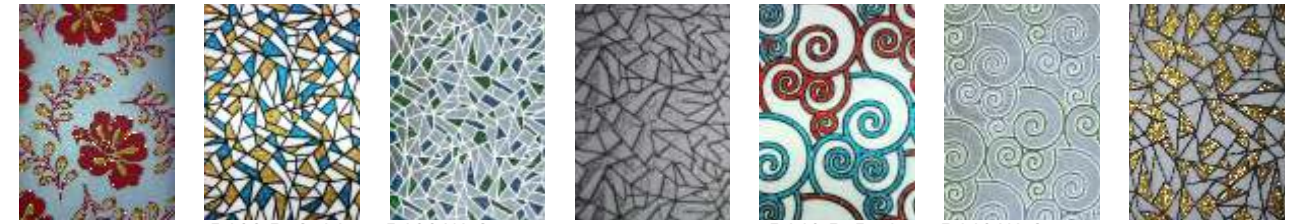


R 116 R 118 R 119 OB R 120 Blue R 121 Blue R 123 R 124 O

ROOFING TEXTURES



R 124 R R 128 Red R 129 R 130 R 132 R 135 Blue R 136 BG



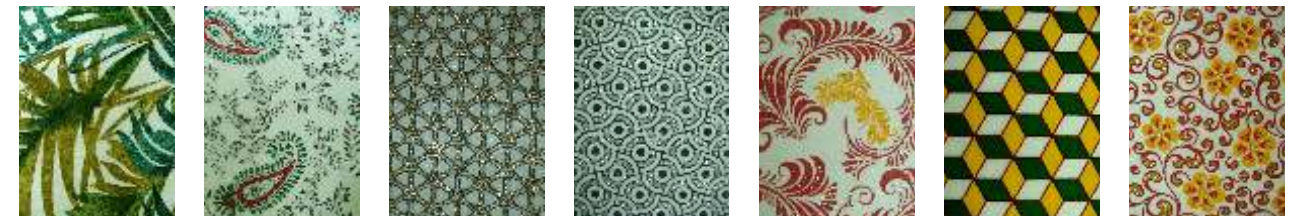
R 137 R Y R139 B-Gold-Skyblue R139 W-Green-Skyblue R 139 S (G) R140 B-Red-Skyblue R140 W-Green-Skyblue R 139 G (B)



R 140 B (S) R 141 O (G) R 142 Blue (S) R 143 G R 148 R 149 R 150 B (S)



R 151 B (S) R 152 S R 153 Blue R 154 R 160 B (C) R 164 B (S) R 168 BG



R 169 R 170 Red Green R 171 Gold R 172 B (S) R 173 RY (G) R 174 Green Yellow R 176 RY (G)



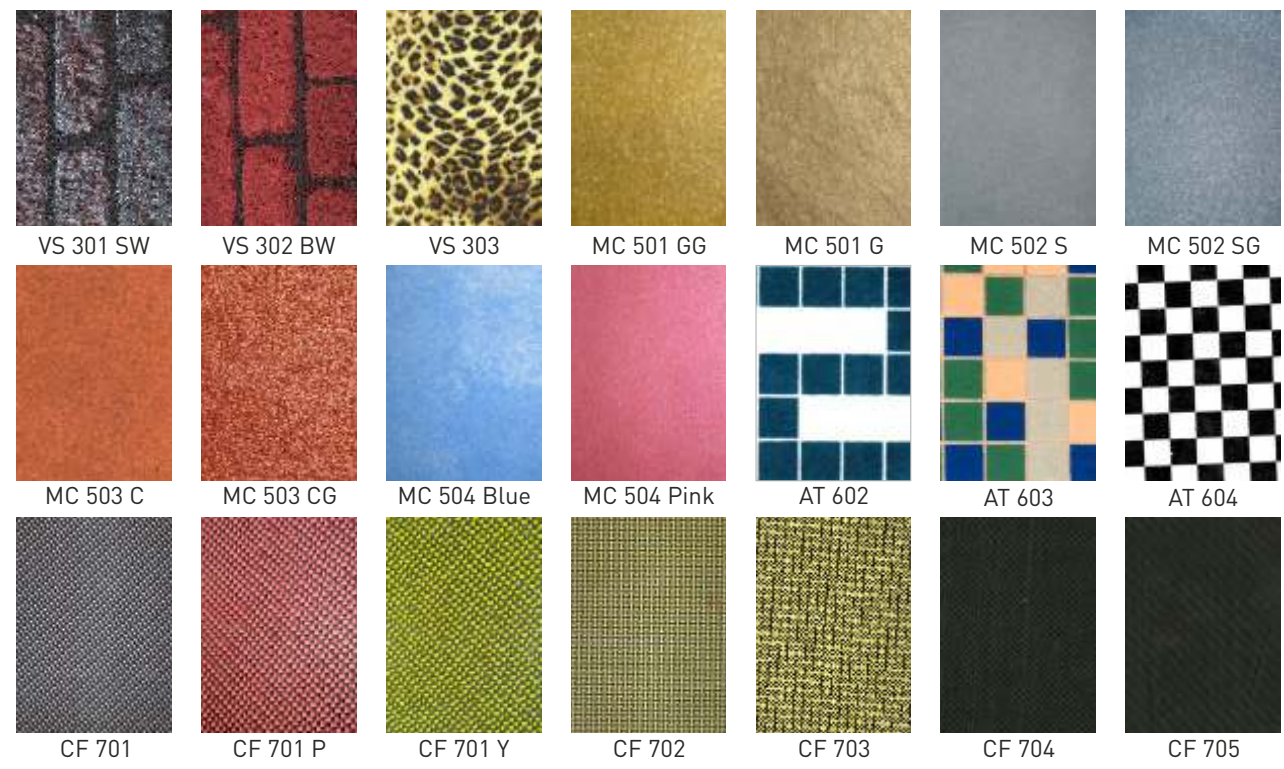
R 178 G R 179 G R 180 G R 181 C R 182 Blue R 183 B (S) R 186 R B (S)



R 133 Red R 189 B (G) R 190 B (S) R 191 B (G) R 192 GR (S)



VERTICAL SURFACE AND METALLIC TEXTURES



APPLICATIONS

